

DT100



STANDARD FEATURES

High Torque Drive system
 Extreme Gradeability - market leading
 Rear Oriented Boom position
 Auto Levelling Basket
 Maximum Approach Angle - market leading
 OSHA and ANSI 92.20 Standards certified
 High Pressure Water/Air connection to Basket
 Automatic Stabilization
 Negative Working Height - market leading
 Remote Management and Diagnostic software
 Up & Over - market leading
 Invisible Boom

ADDITIONAL/OPTIONAL FEATURES

Brushes for Boom protection
 Optional 1 Man Basket
 Optional Cages
 Optional Crane Hook
 16' Wire Control, control at ground
 Radio Control
 Auto-close Functionality

Custom Paint Options available (Upper and Lower sections)
 Electro pump 110V
 Cage for materials handling
 Extra Large Basket
 Fiberglass Basket
 Hook & Crane certification



TECHNICAL SPECIFICATIONS

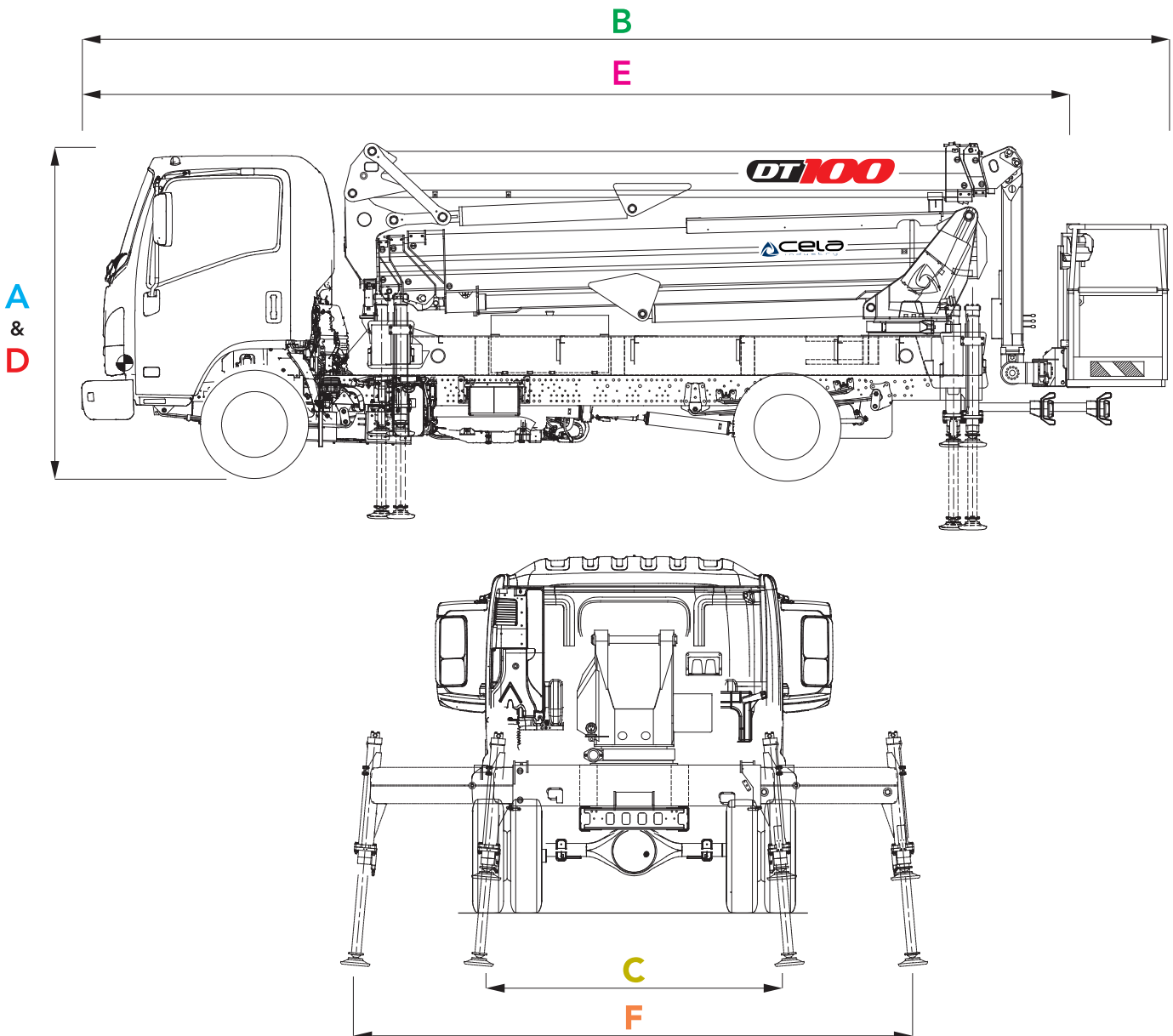
MEASUREMENTS

A	Height Stowed with basket	8'
B	Overall Length with basket	25' 6"
C	Overall Width with outrigger closed	7'
D	Height Stowed without basket	8'
E	Overall Length without basket	23' 9"
F	Overall Width with outrigger open	12' 8"
	Length outrigger footprint	13' 4"

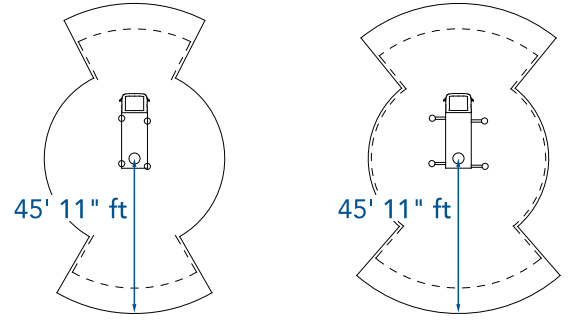
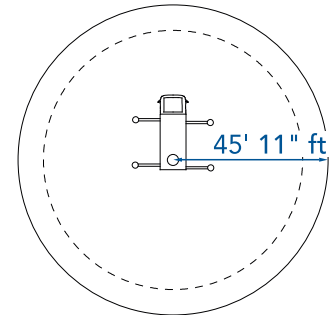
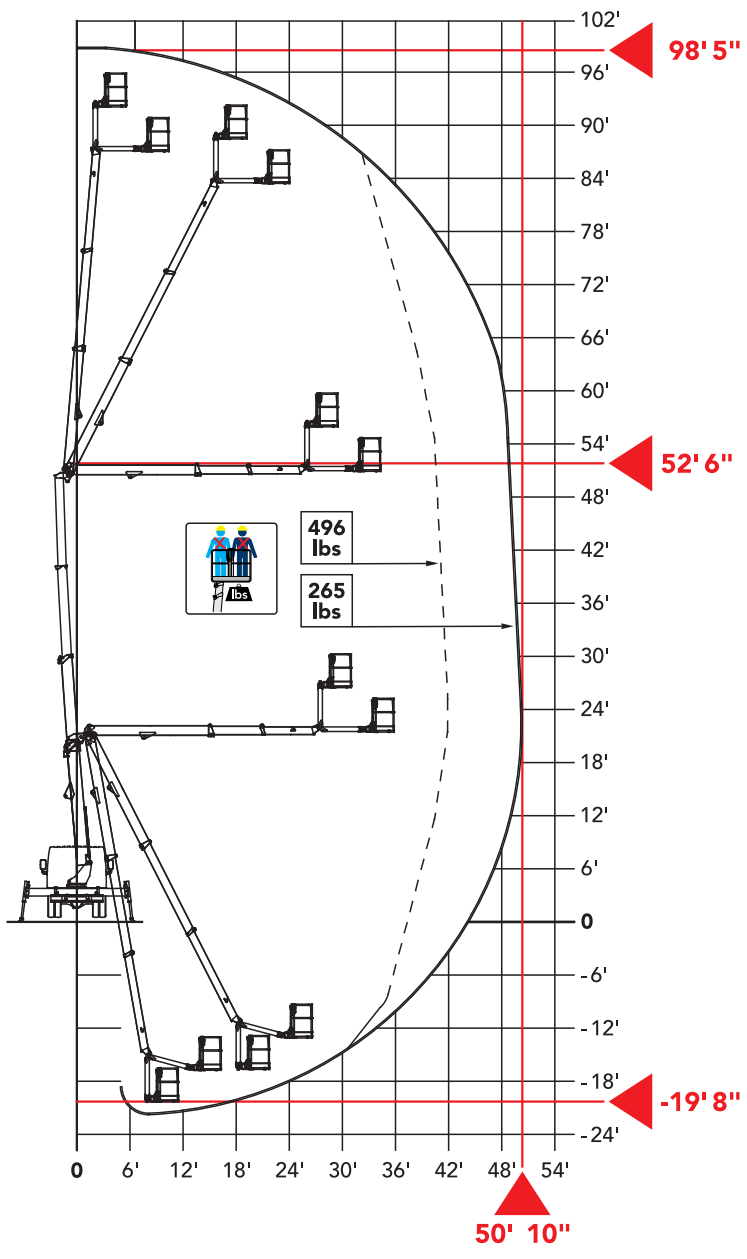
Total weight 14617 lbs

PERFORMANCE

Platform working height (max)	98' 5"
Horizontal outreach (max)	50' 10"
Negative work	- 19' 8"
Up & over clearance	52' 6"
Basket Capacity	496 lbs
Hook Capacity	573 lbs
Moveable jib	160°
Basket rotation	180°
Turret rotation	720°
Maximum approach angle	18 %
Longitudinal maximum gradient of the ground	5 %
Lateral maximum gradient of the ground	10 %
Standard power source	Diesel
Optional power source	Electro pump



720° CONTINUOUS



We fly all over

50' 10" ft →

52' 6" ft ↑

Authorized height landing

Multipurpose lifting options

4' 6" ft

5' 9" ft

Like an elevator

52' 6" ft

