

DT92



STANDARD FEATURES

High Torque Drive system
 Extreme Gradeability - market leading
 Rear Oriented Boom position
 Auto Levelling Basket
 Maximum Approach Angle - market leading
 OSHA and ANSI 92.20 Standards certified
 High Pressure Water/Air connection to Basket
 Automatic Stabilization
 Negative Working Height - market leading
 Remote Management and Diagnostic software
 Up & Over - market leading
 Invisible Boom

ADDITIONAL/OPTIONAL FEATURES

Brushes for Boom protection	Custom Paint Options available (Upper and Lower sections)
Optional 1 Man Basket	Electro pump 110V
Optional Cages	Cage for materials handling
Optional Crane Hook	Extra Large Basket
16' Wire Control, control at ground	Fiberglass Basket
Radio Control	Winch
Auto-close Functionality	Hook & Crane certification



TECHNICAL SPECIFICATIONS

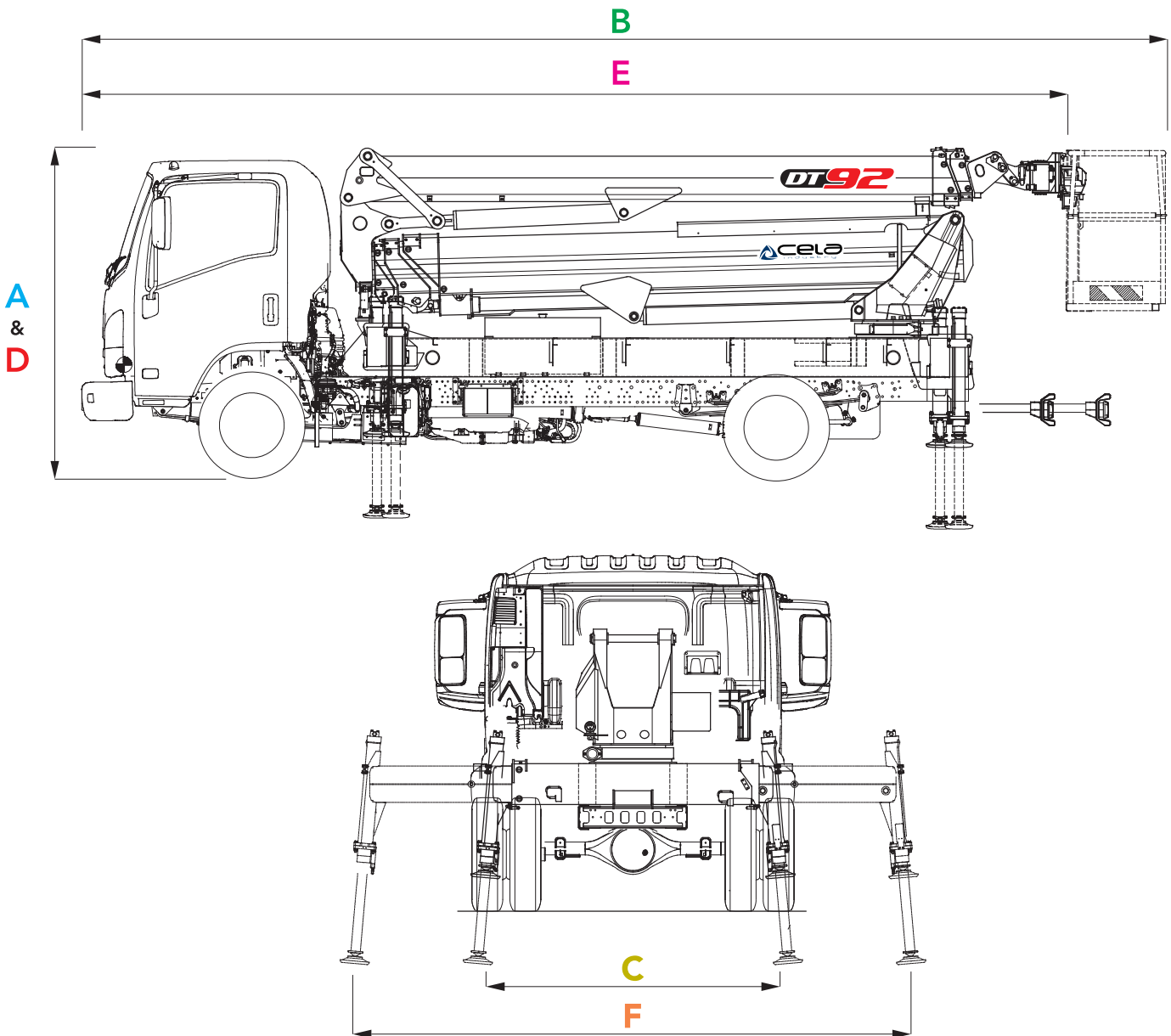
MEASUREMENTS

A	Height Stowed with basket	8'
B	Overall Length with basket	25' 6"
C	Overall Width with outrigger closed	7'
D	Height Stowed without basket	8'
E	Overall Length without basket	24'
F	Overall Width with outrigger open	12' 8"
	Length outrigger footprint	13' 4"

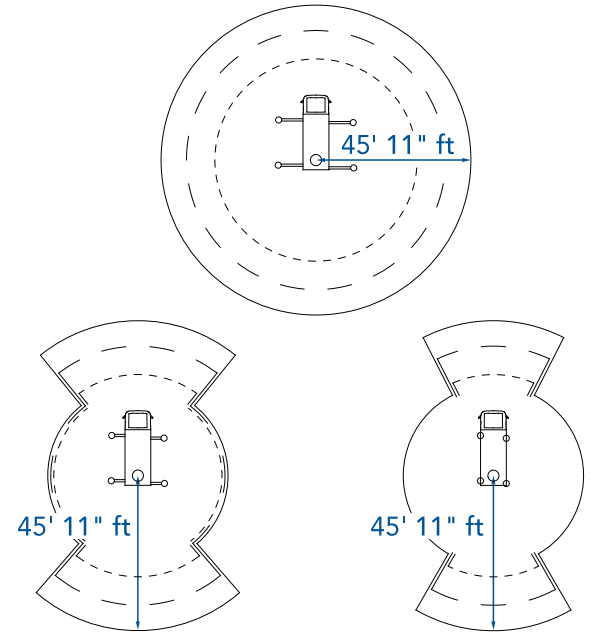
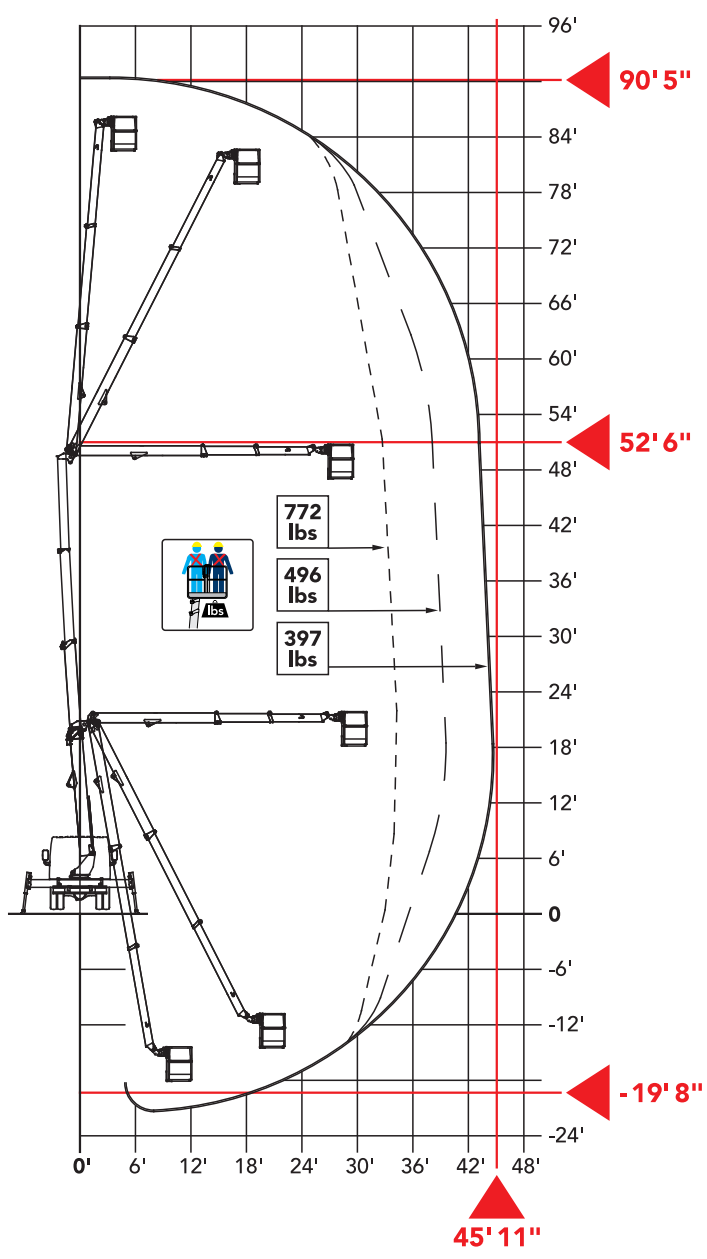
Total weight 14396 lbs

PERFORMANCE

Platform working height (max)	90' 5"
Horizontal outreach (max)	45' 11"
Negative work	- 19' 8"
Up & over clearance	52' 6"
Basket Capacity	772 lbs
Hook Capacity	860 lbs
Basket rotation	180°
Turret rotation	720°
Maximum approach angle	18 %
Longitudinal maximum gradient of the ground	5 %
Lateral maximum gradient of the ground	10 %
Standard power source	Diesel
Optional power source	Electro pump



720° CONTINUOUS



We fly all over

45' 11" ft

52' 6" ft

Authorized height landing

Multipurpose lifting options

4' 6" ft

5' 9" ft

Like an elevator

52' 6" ft

