

**DIECI**  
A M E R I C A S  
TELEHANDLERS



*I series*

10.44 | 11.58 | 12.56

[dieci-america.com](http://dieci-america.com)

## PERFORMANCE

Vehicle model	I 10.44-C - GD	I 11.58-C - GD	I 12.56-C - GD
Maximum capacity	10000 lb (4536 kg)	11000 lb (4990 kg)	12000 lb (5443 kg)
Maximum lifting height	43,8 ft (13,34 m)	58,4 ft (17,80 m)	55,9 ft (17,03 m)
Maximum horizontal extension	30,32 ft (9,2 m)	45,6 ft (13,9 m)	43 ft (13,1 m)
Fork swiveling angle	133°	133°	133°
Pull-out force	12814 lbf (5700 daN)	12814 lbf (5700 daN)	12814 lbf (5700 daN)
Towing force	26078 lbf (11600 daN)	26078 lbf (11600 daN)	26078 lbf (11600 daN)
Maximum climb angle	40%	40%	40%
Unladen weight	27337 lb (12400 kg)	32518 lb (14750 kg)	30865 lb (14000 kg)
Max speed (referred to wheels with maximum permitted diameter)	16,8 mph (27 km/h)	16,8 mph (27 km/h)	16,8 mph (27 km/h)

## BOOM

Vehicle model	I 10.44-C - GD	I 11.58-C - GD	I 12.56-C - GD
Lifting	13,3 s	13,3 s	13,3 s
Descent	9,3 s	9,3 s	9,3 s
Extension	15,5 s	19,0 s	18,0 s
Retraction	7,5 s	12,8 s	11,0 s
Forward swiveling	3,3 s	3,3 s	3,3 s
Reverse swiveling	2,1 s	2,1 s	2,1 s

## ENGINE

Vehicle model	I 10.44-C - GD	I 11.58-C - GD	I 12.56-C - GD
Brand	Kubota	Kubota	Kubota
Nominal power	114 HP (85,1 kW)	114 HP (85,1 kW)	114 HP (85,1 kW)
@rpm	2600 rpm	2600 rpm	2600 rpm
Operation	4-stroke	4-stroke	4-stroke
Injection	Electronic, Common Rail	Electronic, Common Rail	Electronic, Common Rail
Number and arrangement of cylinders	4, Vertical in line	4, Vertical in line	4, Vertical in line
Displacement	230 in <sup>3</sup> (3769 cm <sup>3</sup> )	230 in <sup>3</sup> (3769 cm <sup>3</sup> )	230 in <sup>3</sup> (3769 cm <sup>3</sup> )
Consumption	353,68 lb/Hp h (215 g/kWh)	353,68 lb/Hp h (215 g/kWh)	353,68 lb/Hp h (215 g/kWh)
@rpm	2600 rpm	2600 rpm	2600 rpm
Emission standard	Stage IV/Tier 4f	Stage IV/Tier 4f	Stage IV/Tier 4f
Exhaust gas treatment	DOC+DPF+SCR	DOC+DPF+SCR	DOC+DPF+SCR
Cooling system	Liquid	Liquid	Liquid
Intake	Turbocharger after-cooler	Turbocharger after-cooler	Turbocharger after-cooler

## DIFFERENTIAL AXLES

Vehicle model	I 10.44-C - GD	I 11.58-C - GD	I 12.56-C - GD
Type of axles	2 steering, with 4 epicycloidal reduction gears	2 steering, with 4 epicycloidal reduction gears	2 steering, with 4 epicycloidal reduction gears
Type of steering	4 wheels / transversal / 2 wheels	4 wheels / transversal / 2 wheels	4 wheels / transversal / 2 wheels
Front axle	With transverse leveling device (8° + 8°) with control in the cab and 45% self-locking differential	With transverse leveling device (8° + 8°) with control in the cab and 45% self-locking differential	With transverse leveling device (8° + 8°) with control in the cab and 45% self-locking differential
Rear axle	Oscillating with automatic lock	Oscillating with automatic lock	Oscillating with automatic lock
Service braking	Oil bath with servo brake on front axle with double hydraulic system	Oil bath with servo brake on front axle with double hydraulic system	Oil bath with servo brake on front axle with double hydraulic system
Parking braking	Negative actuation with electrical control	Negative actuation with electrical control	Negative actuation with electrical control

## HYDRAULIC SYSTEM

Vehicle model	I 10.44-C - GD	I 11.58-C - GD	I 12.56-C - GD
Hydraulic pump type	Dual gear pump for power steering and movements	Dual gear pump for power steering and movements	Dual gear pump for power steering and movements
Hydraulic pump capacity	37 gal/min (140 L/min)	37 gal/min (140 L/min)	37 gal/min (140 L/min)
Max. operating pressure	3626 psi (25,0 MPa)	3626 psi (25,0 MPa)	3626 psi (25,0 MPa)
Distributor control	4 in 1 proportional Joystick	Proportional 4in1 Joystick	4 in 1 proportional Joystick
Outriggers	OPT.	2 with proportional control and independent from the cab	2 with proportional control and independent from the cab

## REFUELING

Vehicle model	I 10.44-C - GD	I 11.58-C - GD	I 12.56-C - GD
Hydraulic system (total)	50,19 gal (190,0 L)	50,19 gal (190,0 L)	50,19 gal (190,0 L)
Fuel tank	31,7 gal (120,0 L)	31,7 gal (120,0 L)	31,7 gal (120,0 L)
AdBlue tank	5,28 gal (20 L)	5,28 gal (20 L)	5,28 gal (20 L)

## TRANSMISSION

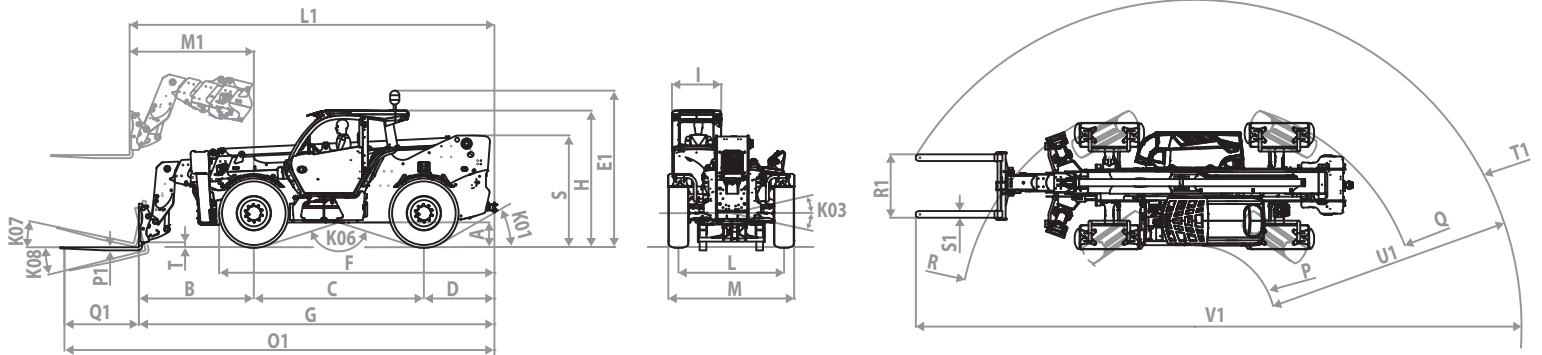
Vehicle model	I 10.44-C - GD	I 11.58-C - GD	I 12.56-C - GD
Transmission type	Hydrostatic with electronic control with variable displacement pump and ECO function	Hydrostatic with electronic control with variable displacement pump and ECO function	Hydrostatic with electronic control with variable displacement pump and ECO function
Hydraulic motor	Hydrostatic with continuous automatic adjustment	Hydrostatic with continuous automatic adjustment	Hydrostatic with continuous automatic adjustment
Reversal	With electronic control operated with vehicle in motion	With electronic control operated with vehicle in motion	With electronic control operated with vehicle in motion
Inching	With electronic pedal for controlled forward movement	With electronic pedal for controlled forward movement	With electronic pedal for controlled forward movement
Transmission gearbox	Servo-controlled 2-speed	Servo-controlled 2-speed	Servo-controlled 2-speed

## TIRES

Vehicle model	I 10.44-C - GD	I 11.58-C - GD	I 12.56-C - GD
Standard tires	14.00x24"	14.00x24"	14.00x24"

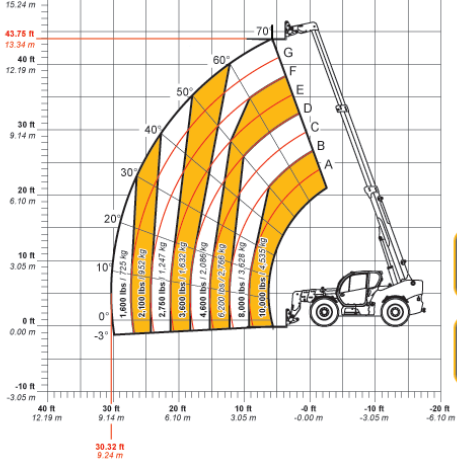
## DIMENSIONS

Vehicle model	I 10.44-C - GD	I 11.58-C - GD	I 12.56-C - GD
A	18,9 in (480 mm)	18,9 in (480 mm)	18,9 in (480 mm)
B	69,9 in (1775 mm)	87,8 in (2230 mm)	78,9 in (2005 mm)
C	129,9 in (3300 mm)	129,9 in (3300 mm)	129,9 in (3300 mm)
D	50,2 in (1275 mm)	53,9 in (1370 mm)	50,2 in (1275 mm)
E1	115,2 in (2925 mm)	115,2 in (2925 mm)	115,2 in (2925 mm)
F	206,5 in (5245 mm)	232,3 in (5900 mm)	206,5 in (5245 mm)
G	250 in (6350 mm)	271,7 in (6900 mm)	259,1 in (6580 mm)
H	104,3 in (2650 mm)	104,3 in (2650 mm)	104,3 in (2650 mm)
I	37,8 in (960 mm)	37,8 in (960 mm)	37,8 in (960 mm)
K01	30°	30°	30°
K03	10°	10°	10°
K06	145°	145°	145°
K07	14°	14°	14°
K08	119°	120°	119°
L	80,7 in (2050 mm)	80,7 in (2050 mm)	80,7 in (2050 mm)
L1	257,7 in (6545 mm)	278,7 in (7080 mm)	266,7 in (6775 mm)
M	96,1 in (2440 mm)	96,1 in (2440 mm)	96,1 in (2440 mm)
M1	78,9 in (2005 mm)	94,9 in (2411 mm)	88 in (2235 mm)
O1	310 in (7875 mm)	328,5 in (8345 mm)	319,1 in (8105 mm)
P	62,2 in (1579 mm)	62,2 in (1579 mm)	62,2 in (1579 mm)
P1	2,4 in (60 mm)	2,4 in (60 mm)	2,4 in (60 mm)
Q	172,4 in (4379 mm)	172,4 in (4379 mm)	172,4 in (4379 mm)
Q1	60 in (1525 mm)	60 in (1525 mm)	60 in (1525 mm)
R	179 in (4547 mm)	179 in (4547 mm)	179 in (4547 mm)
R1	48,4 in (1230 mm)	48,4 in (1230 mm)	48,4 in (1230 mm)
S	85,1 in (2162 mm)	85,1 in (2162 mm)	85,1 in (2162 mm)
S1	5,1 in (130 mm)	5,1 in (130 mm)	5,1 in (130 mm)
T	2,4 in (60 mm)	3,9 in (100 mm)	3,9 in (100 mm)
T1	236,2 in (6000 mm)	249,7 in (6342 mm)	243,7 in (6190 mm)
U1	174,1 in (4421 mm)	187,7 in (4767 mm)	181,5 in (4611 mm)
V1	431,9 in (10970 mm)	461,8 in (11730 mm)	448,4 in (11390 mm)





MAX 10,000 lbs / 4,535 kg



ANSI/ITSDF B56.6-2011

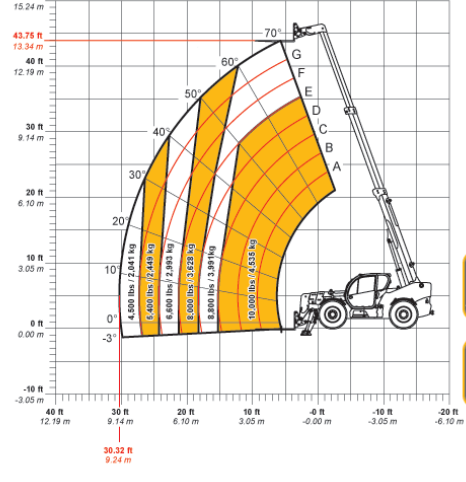
DOCDI0000846



10.44



MAX 10,000 lbs / 4,535 kg



ANSI/ITSDF B56.6-2011

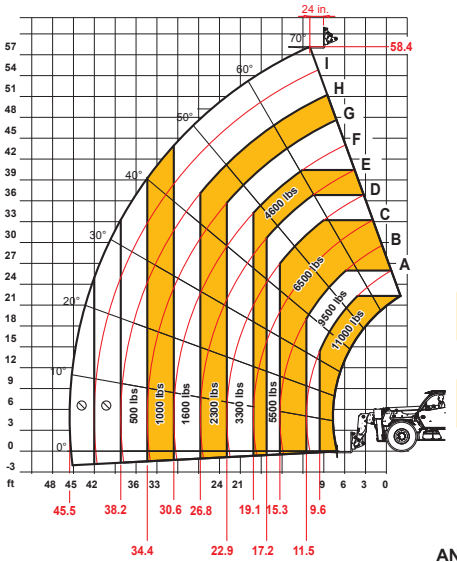
DOCDI0000847



10.44



MAX 11000 lb



ANSI B56.6

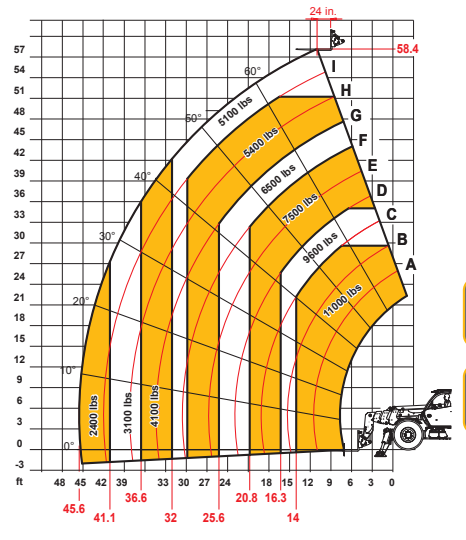
DOCDI0001060



11.58



MAX 11000 lb



ANSI B56.6

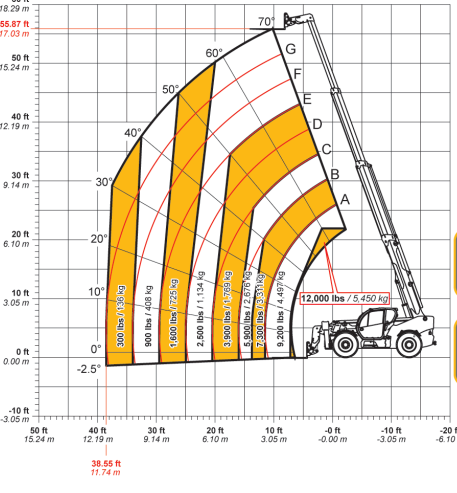
DOCDI0001061



11.58



MAX 12,000 lbs / 5,450 kg



ANSI/ITSDF B56.6-2011

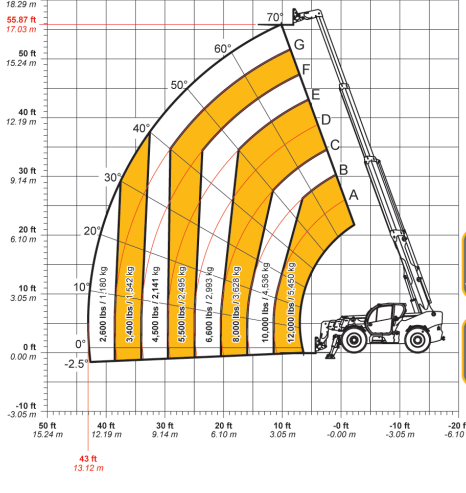
DOCDI0000656



12.56



MAX 12,000 lbs / 5,450 kg



ANSI/ITSDF B56.6-2011

DOCDI0000657



12.56