

MANISCOPIC

MLT 627
TURBO

- Combining high performance with compact dimensions



 **MANITOU**

MLT 627 Turbo with

2. A made-to-measure compact version

The MLT 627 T cab is truly comfortable and the controls are easy to use. Mach



20" Compact version

The cab, with no reduction in headroom, is at the lowest point of the chassis to give an ultra compact machine while retaining the ground clearance of a true rough terrain machine.

1. High Performance

The MLT 627 T features the latest technology combined with simplicity of design, and offers a capacity of 2700 kg to a lift height of 5.5m (20" tyres) or 5.55m (24").

It is ideal for all farming applications where space is at a premium – particularly for accessing narrow feed passages and traditional farm buildings.

With high power to weight ratio, stability, drawbar pull and breakout force the MLT 627 T offers high productivity and efficiency for today's modern farmer.

Mucking out, clamp silage work and bale stacking are all well within the machines capability.

With standard jaw mounted hitch and trailer braking the MLT 627 T offers impressive towing performance (7100 daN drawbar pull) and additional safety.



5. An extension of your arm: the MonoUltra control

For your comfort, control your Maniscopic's hydraulic operations (flow:105 l/mn) smoothly and easily with a hydraulically assisted joystick with arm-rest.

MonoUltra control

Machine with 3 cab heights

Machine width is also compact: only 2.01m on both the MLT 627 T standard and compact 20".



20" Standard version

Compact to operate in restricted conditions.

2.21 m



24" Standard version

For higher tractive effort and better road travel performance.

2.30 m

There is also a choice of machine width:

20" tyres - 2.01m

24" tyres - 2.17m



3. Perkins 1104 Euro² Vista series

The 1100 series engines have been developed specifically both on performance criteria and compliance with the Phase 2 regulations on polluting emissions:

- 101 hp
- 4.4 litre capacity
- Turbo engine
- Awesome torque at low rpm
- Fuel consumption mastered
- 30% of torque in reserve
- Sustained power curve

4. Even faster

Travelling speed is a major feature, so with the MLT 627 T you can travel up to 30-34kph (depending on the option of tyre).

MLT 627, the natural successor to the proven 5 series


MANISCOPIC

The MLT 627 T succeeds the previous 5 series range but retains the same width (20" tyres), even lower cab height but has the added option of high flotation 24" tyres which give even greater road speed and ground clearance.

More lift height, faster hydraulic speed and Mono ultra servo joystick are all added benefits.



MLT 627 TURBO

 **Lifting capacity**2700 kg
at 500 mm from forks heels


 **Lifting height**
20"5.50 m
24"5.55 m


Times : unladen/loaded (in s)
Lifting6.8/7.1
Lowering4.8/4.7
Boom extension4.5/4.6
Boom retraction2.2/2.2
Time unladen (in s)
Crowd3.5
Dump2.7


 **Tyres**
20"400/70-20 T37
24"17.5 LR 24 XM27


 **Forks (mm)**
Length1200
Width125
Carriage rotation154°

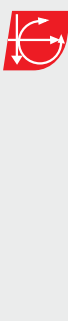
 **Oil bath multidisc brakes on front/rear axle**

 **Perkins engine**
Type1104C.44 Turbo
Cylinders4 cyl./4400 cm³
Power (ISO/TR 14396)101 HP/74.5 kw
Maximum torque412 Nm at 1400 tr/mn
Direct injection
Water cooling

 **Transmission**Torque Converter
Electro - hydraulic reversing shift
4 speeds forward and reverse
Maximum travel speed :
20"30 km/h
24"34 km/h

 **Hydraulics**
Lifting/tilting pump :
gear type105 l./mn - 250 bars
Flow divider with priority to steering

 **Capacities**
Cooling system25 l.
Engine oil8.5 l.
Hydraulic oil98 l.
Transmission oil14.5 l.
Fuel tank104 l.

 **Weight unladen (with forks)**5935 kg
Model20" | 24"
Overall width2.01 m | 2.17 m
Overall height:
MLT 627 T compact2.06 m | -
MLT 627 T2.21 m | 2.30 m
Turning radius
(outside wheels)3.64 m | 3.70 m
Overall length4.69 m | 4.68 m
Ground clearance0.36 m | 0.49 m
Drawbar pull :
MLT 627 T/MLT 627 T compact7100 daN

"TAILOR MADE" DIMENSIONS

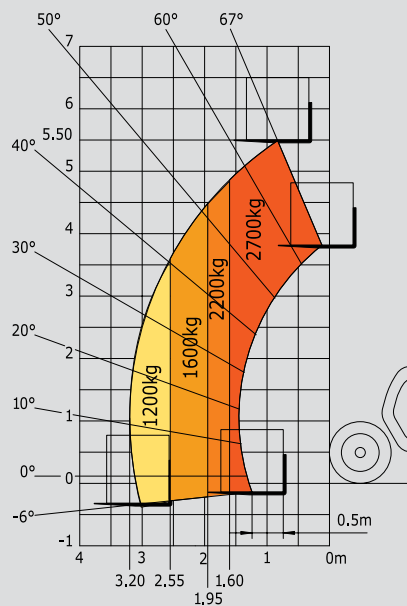


Compact version 20"

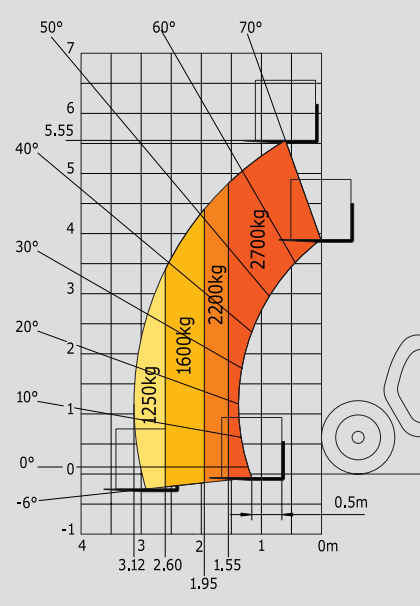
Standard version 20"

Standard version 24"

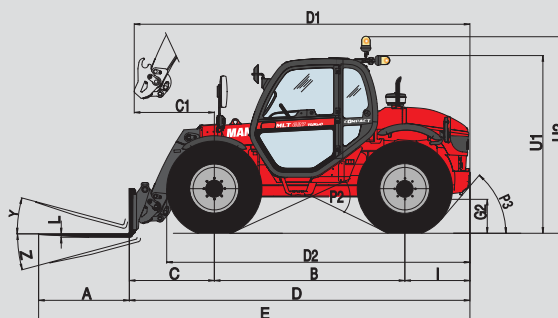
20" Reach at maximum height: 0.90 m



24" Reach at maximum height: 0.75 m

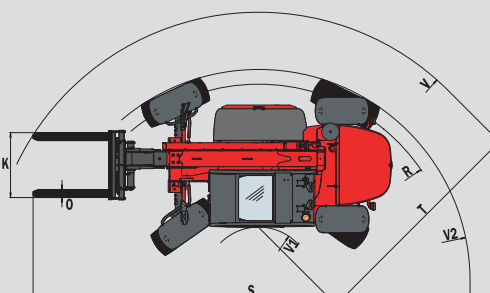
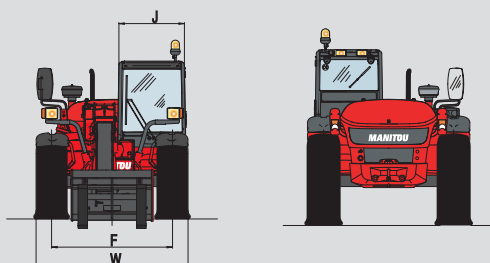


Under EN 1459 annexe B



	MLT 627 T	
	20"	24"
A	1200	1200
B	2520	2520
C	1307	1307
C1	1260	1260
D	4687	4687
D1	4640	4640
D2	3870	
E	5887	5887
F	1600	1720
G	400	490
I	860	860
J	866	866
K	1260	1260
L	45	45
O	125	125
P2	41°	50°
P3	39°	49°
R	3385	3405
S	7482	7507
T	3520	3545
U1	2060/2210	2300
U2	2320	2560
V	4770	4750
V1	1250	1205
V2	3700	3700
W	2010	2175
Y	11.8°	11.8°
Z	142.3°	142.3°

mm



Manitou, material handling world leader

Inventor of the rough terrain forklift truck, Manitou offers today the most comprehensive range to meet all specific handling and personal lifting requirements :



Telescopic trucks

MANISCOPIC

Rough terrain and semi industrial masted trucks

MANITOU



Access equipment

MANIACCESS

Compact telescopic handler

Twisco



Truck mounted forklifts

MANITRANSIT

Backhoe/Loader with telescopic boom

MANIHOE

Swinging arm and articulated wheeled loaders

MANILOADER



Electric pallet trucks and electric stackers

MANILEC



A network of skilled professionals at your service

With a network of 500 service and parts centres in more than 100 countries, Manitou provides an efficient after-sales support based on the expertise of 2000 factory trained technicians.



The equipment supplied with each model may differ from that described in this leaflet. For more details, contact your MANITOU dealer.

MANITOU BF SA

B.P. 249 - 44158 Ancenis Cedex - France
Tél. : 33 2 40 09 10 11 / Export Department Fax : 33 2 40 09 10 97
www.manitou.com

700371EN 10/06

