

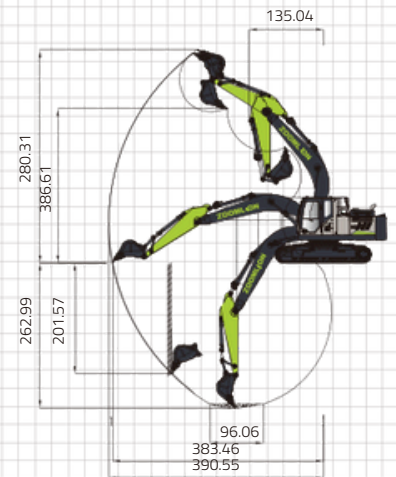
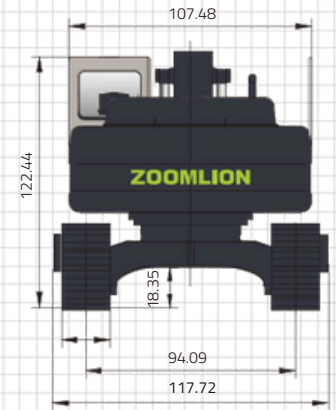
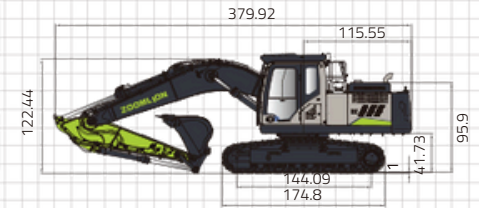
# CRAWLER EXCAVATOR ZE210GLC



**ZOOMLION**

# CRAWLER EXCAVATOR ZE210GLC

	Items	ZE210GLC	
Basic Technical Data	Operating Weight	22700-23600 kg	50,000-52,000 lbs
	Standard bucket capacity	0.85-1.2 m <sup>3</sup>	1.11-1.57 yd <sup>3</sup>
	Slewing Speed	12 r/min	
	Traveling Speed (high/low)	5.5 /3.5 km/h	3.4/2.17 mph
	Max. Drawbar Pull	210 kN	47,165 lbf
	Digging Force of Bucket	150 kN	33,720 lbf
	Digging Force of Stick	109 kN	24,500 lbf
Engine	Engine Manufacturer	CUMMIN	
	Engine Model	S B6.7	
	Rated Power	129 kw/2200 rpm	173 HP/2000 rpm
	Displacement	6.7 L	409 in <sup>3</sup>
	Emission Standard	EU Stage V/Tier 4F	
Dimensions	Length	9650 mm	379.92 in
	Width	2990 mm	117.72 in
	Height	3110 mm	122.44 in
	Tail Slewing Radius	2935 mm	115.55 in
	Track Gauge	2390 mm	94.09 in
	Length of Track on Ground	3660 mm	144.09 in
Operating Range	Max. Digging Radius	9920 mm	390.55 in
	Max. Digging Reach	9740 mm	383.46 in
	Max. Digging Depth	6680 mm	262.99 in
	Max. Digging Height	9820 mm	386.61 in
	Max. Dumping Height	7120 mm	280.31 in



219 E. Madison St. Dublin, GA 31021  
sales@tristaraerial.com (877) 611-0380

**ZOOMLION**

**Zoomlion Heavy Industry Science & Technology Co.,Ltd.**

Add: No.361, South Yinpen Road, Changsha, Hunan Province, P.R.China 410013

Email: earthmoving@zoomlion.com

Copyright©2023 Zoomlion. All rights reserved. Reproduction and copying of any part of contents is not allowed for any purposes without Zoomlion's approval.  
Note: Materials and specifications are subject to change without notice. Featured machines in photos may include additional equipment.

